



# FAXport

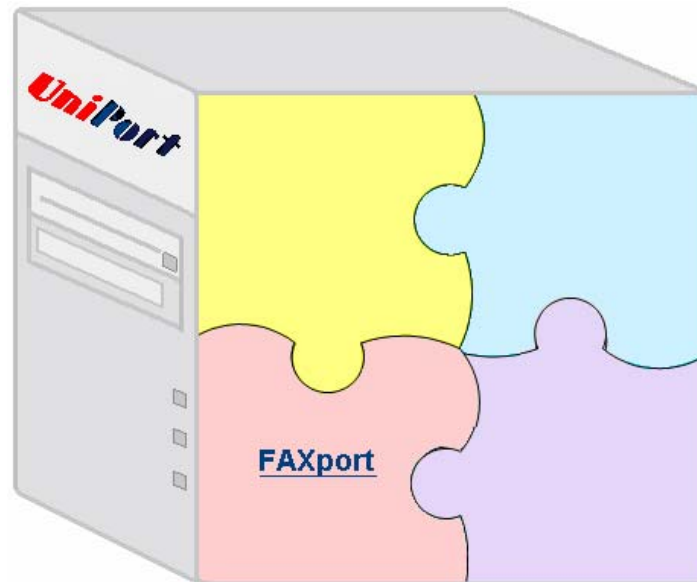


Version 10

TYREXcell


Dec 2007

# FAXport



**FAXport – IP Fax Messaging System,  
including connectors to: E-mail, SAP,  
Production fax, Multifunction office  
machines, and mobile applications.**

# What is FAXport V10

A decorative graphic consisting of three overlapping squares: a yellow one at the top, a red one to the left, and a blue one at the bottom.

FAXport IP Fax Messaging software allows users from their desktop and anywhere on the network - to prepare, preview, send, and receive faxes.

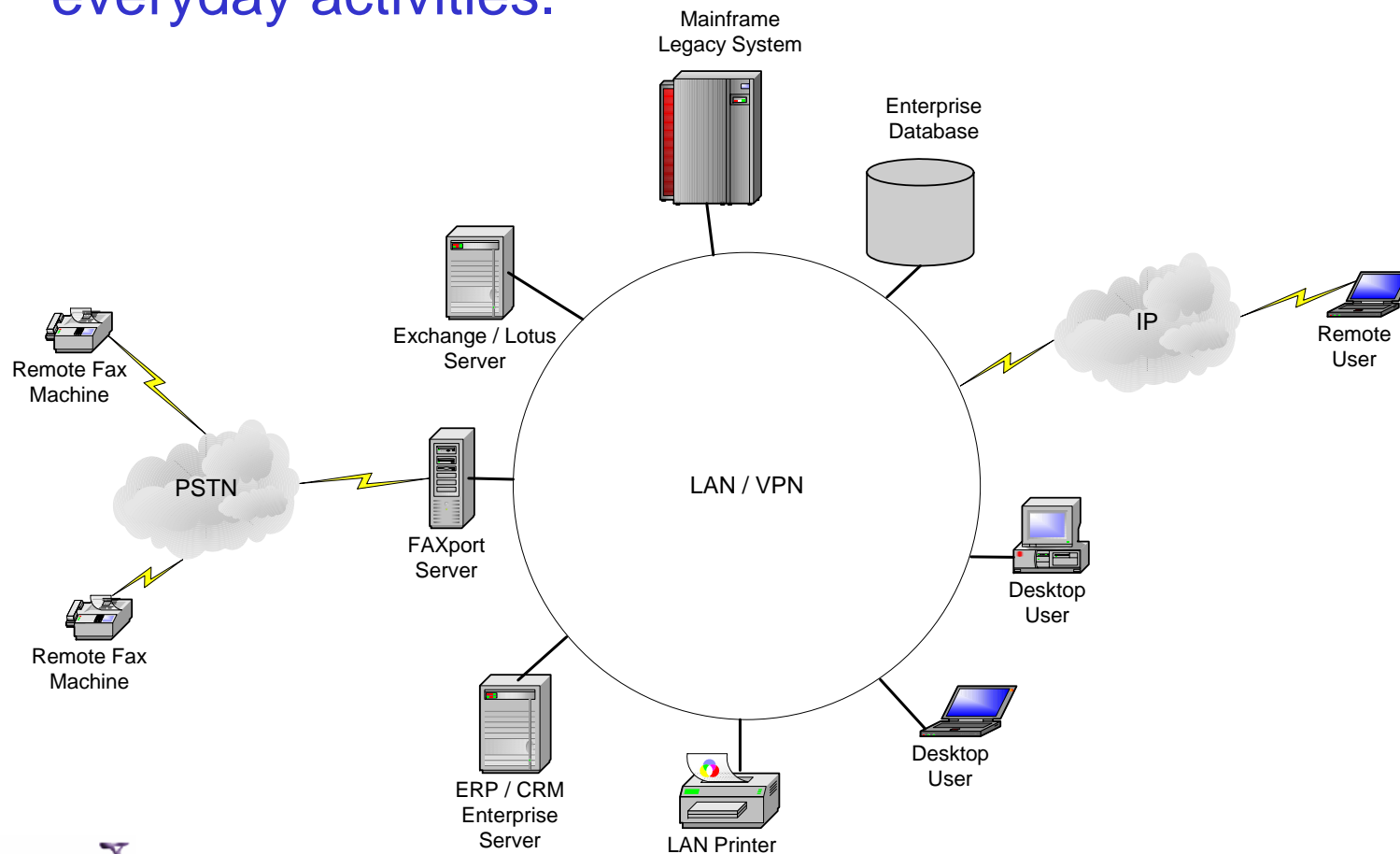
FAXport is a feature-rich technology that provides economical network faxing capabilities and improved productivity, eliminating the need for dedicated fax machines and phone lines.



# FAXport Architecture



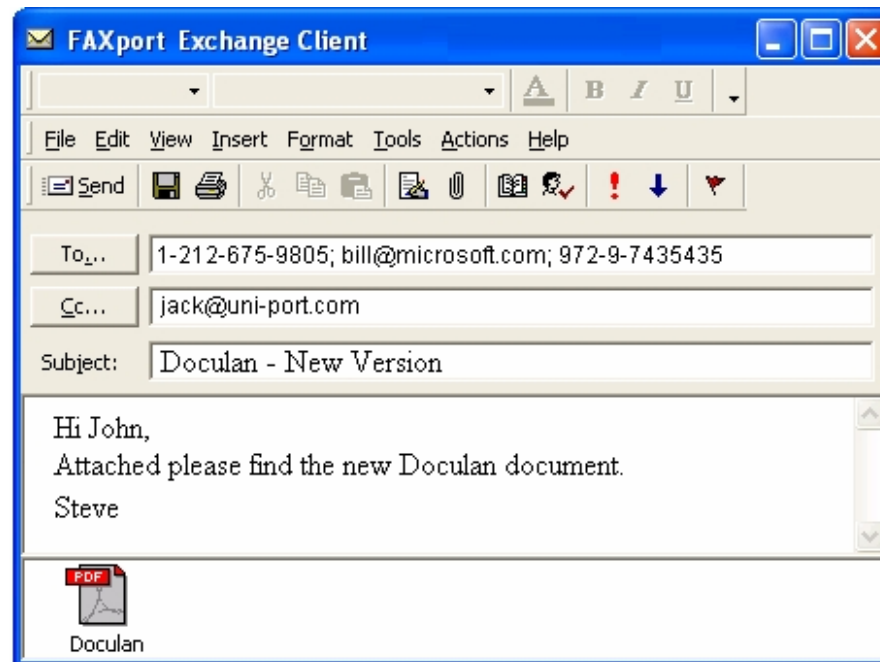
Through integrating FAXport with e-mail and the most common applications, FAXport becomes a part of everyday activities.



# FAXport 4 Exchange & Lotus Notes



FAXport for Microsoft Exchange / Lotus Note, serves as a seamless fax connector / gateway that allows sending, receiving and tracking faxes directly from Outlook / Lotus client. Time and money spent on user training is saved. FAXport delivers a complete communications solution for any size enterprise.



# FAXport 4 Exchange



## Feature

## Benefit

Fax from MS Exchange .....	<b>No new software to learn</b>
Use Exchange Address books .....	<b>Use your current database</b>
Create public attachments .....	<b>Share resources</b>
Receive faxes in the Exchange Inbox ..	<b>Open faxes as mail</b>
View Sent faxes in the Mailbox .....	<b>Easy tracking of fax jobs</b>

# FAXport 4 Exchange



Comparison table between FAXport Exchange / Lotus Notes Connector with other similar products

Topic	FAXport	Other Fax Servers
<b>Technology</b>	The FAXport Exchange Connector is based on a mailbox. It supports all versions of Exchange and Outlook, old and future versions.	The fax connector is installed on the Exchange server. New versions of Exchange and Outlook will require a modification in the fax server.
<b>User Experience</b>	Sending a fax is as simple as sending an e-mail. type the fax number in the "To" field, add attachments and "Send"	To send a fax, the user needs to enter the fax number inside a formula [fax:12345], which is not user friendly.
<b>Languages</b>	Full support	Partial support
<b>Remote Users</b>	Remote users can access FAXport, even if they are not connected to the corporate VPN.	Remote users need to access the corporate VPN to use the Fax Server.
<b>Installation</b>	There is no need to install software components on the Exchange server, and no need to change the scheme.	Software components have to be installed on the Exchange server, and the scheme needs to be modified.

# Inbound Fax

## Benefits

- ✓ **Availability**      The fax is never busy.
- ✓ **Immediacy**      The fax arrives with no delays.
- ✓ **Convenience**    The fax arrives to the user's desktop.
- ✓ **Privacy**          The fax will be seen only by the recipient.
- ✓ **Efficiency**        No need to search for lost faxes...
- ✓ **Fax Forward**     Faxes can be forwarded as e-mail

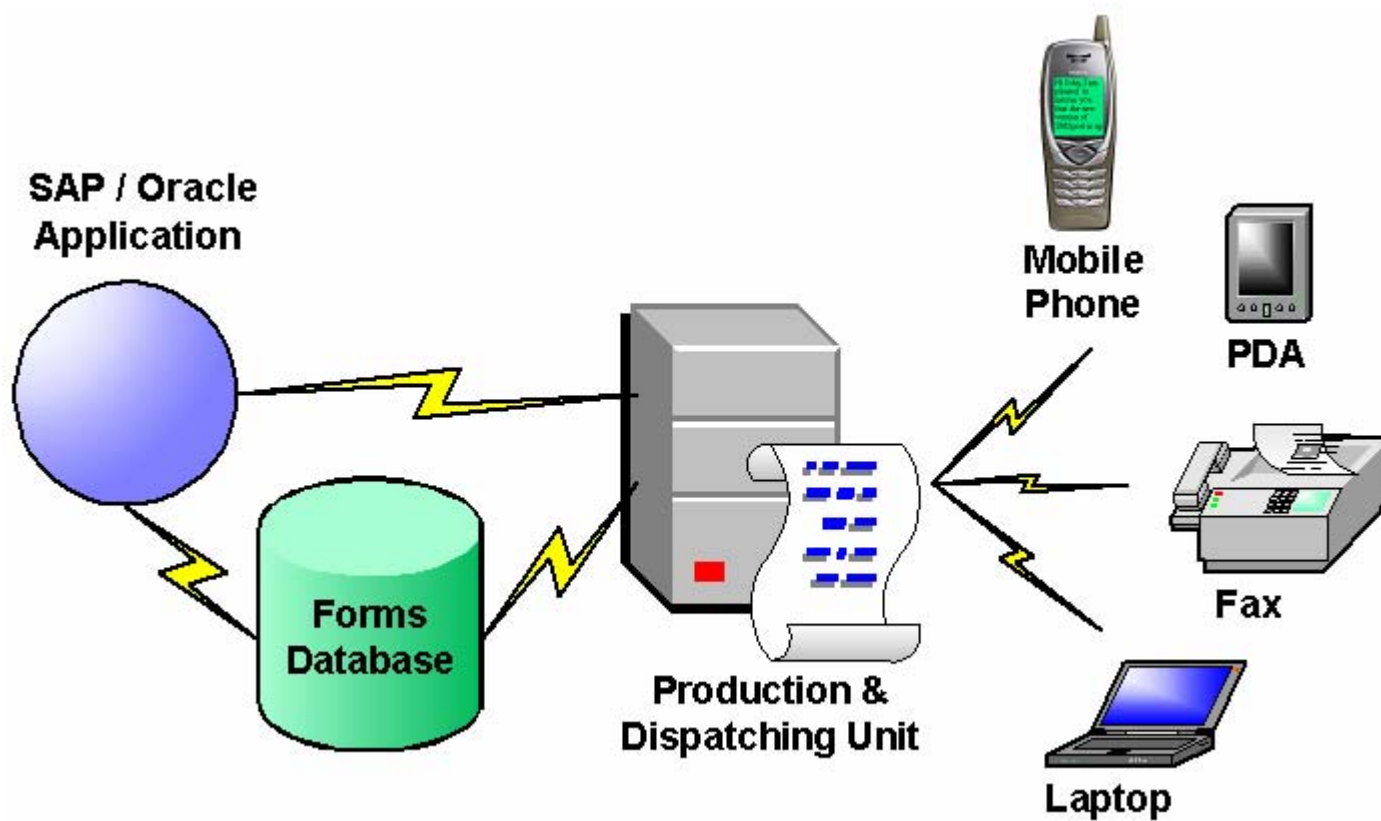


# Inbound Fax

## Benefits

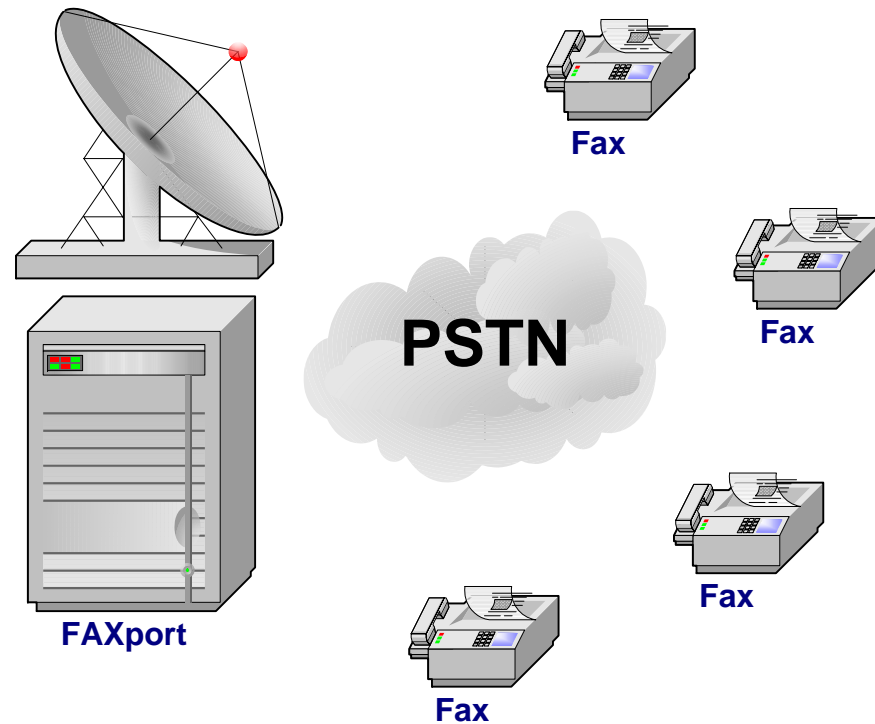
- ✓ **Location Independent**      Inbound faxes can be read anywhere – as e-mail.
- ✓ **Savings**                      No need for paper, toner, special fax lines.
- ✓ **Electronic Archiving**      Faxes can be archived as electronic document
- ✓ **Free Fax Machines**        Existing fax machines are less busy.

# Production Fax



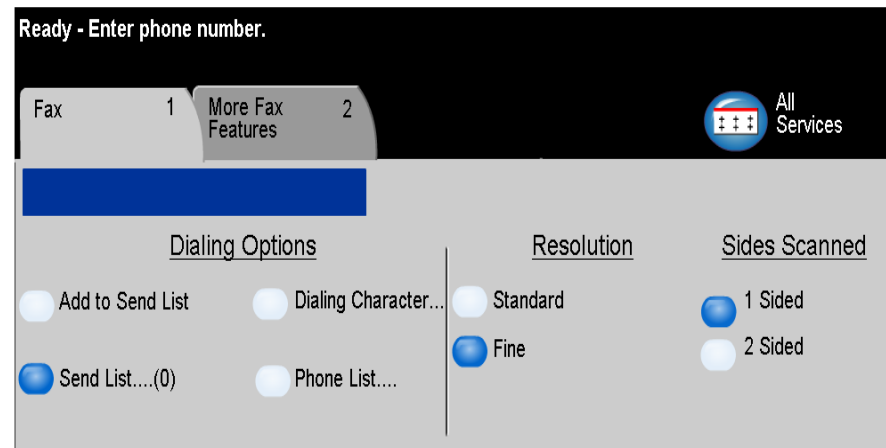
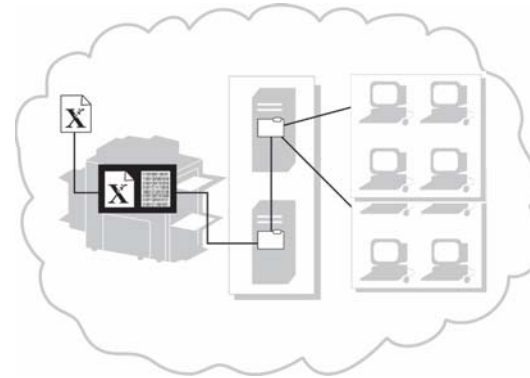
FAXport enables automatic delivery of mission-critical documents from SAP, Oracle Application, and many popular ERP and CRM systems.

# Fax Broadcasting



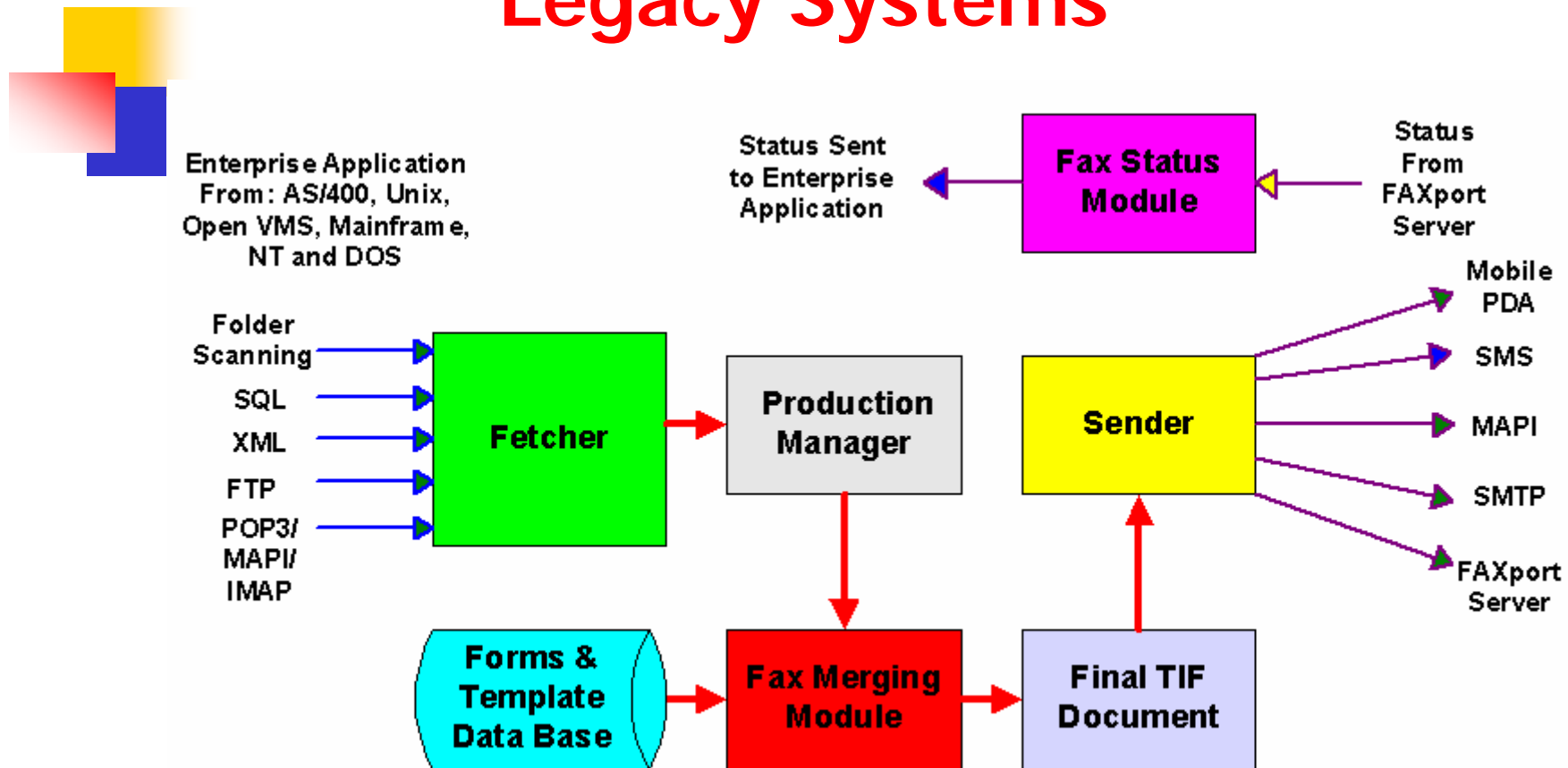
Fax broadcasting with mail-merge capabilities is easy to use, fast, and efficient

# Sending Fax from Multifunction Machines



FAXport allows sending faxes from Xerox, HP & Konica Minolta multifunction machines on the LAN.

# Send Faxes from Legacy Systems



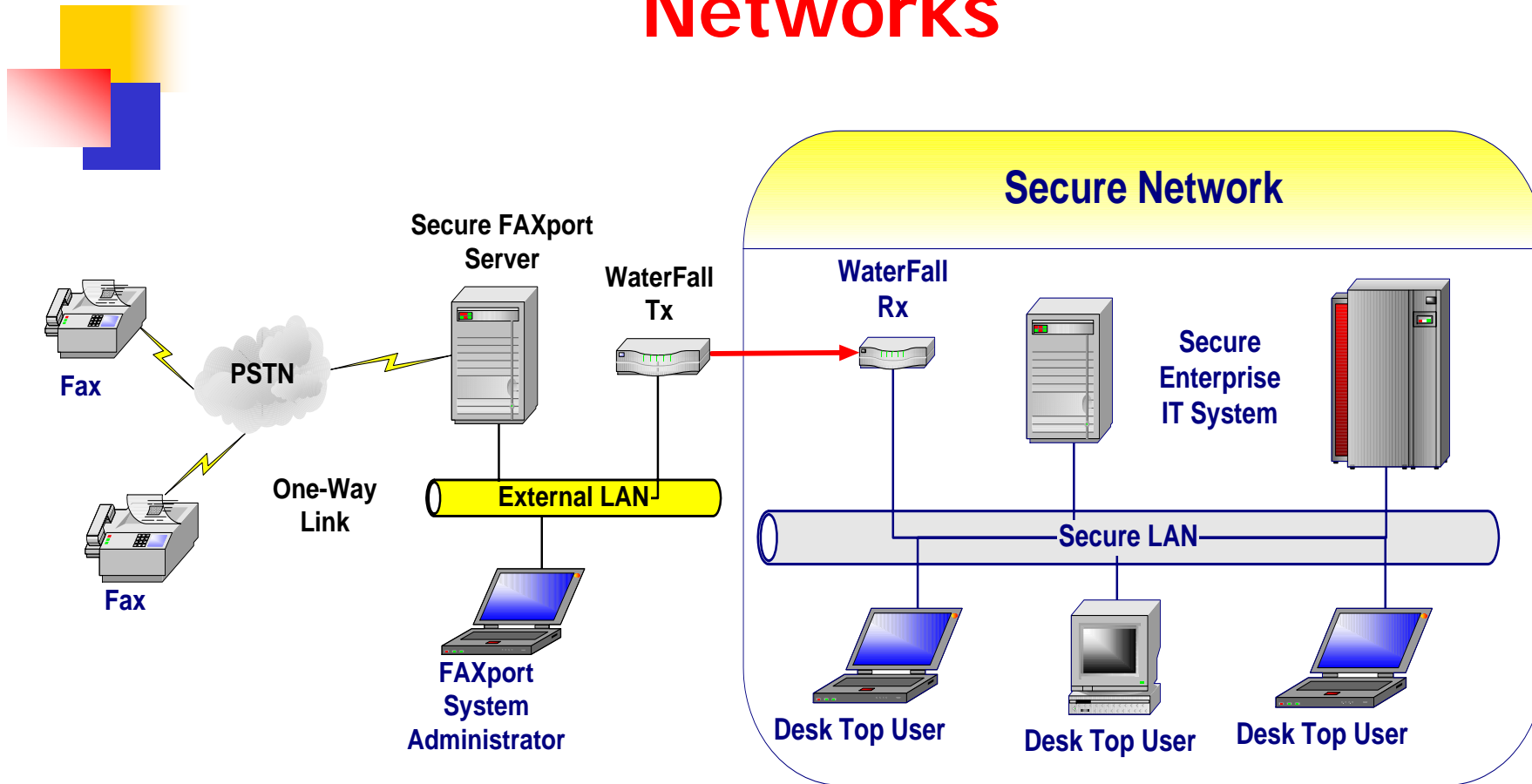
Faxes can be sent automatically from the enterprise Legacy systems, and any CRM & ERP application.

# Remote Printing



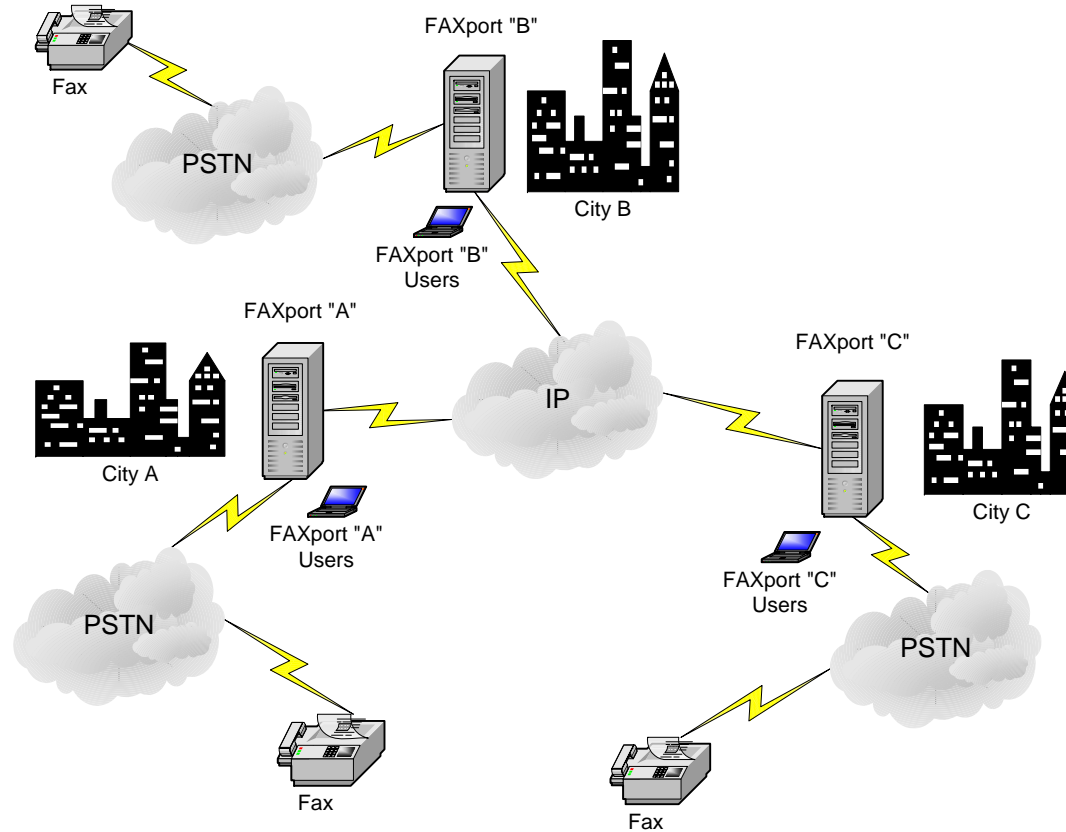
FAXport offers comprehensive printing solutions from wireless devices to any fax machine, when powered by SMSport.

# FAXport for Secure Networks



All the benefits of a fax server, without breaching of network security.

# Fax Over IP



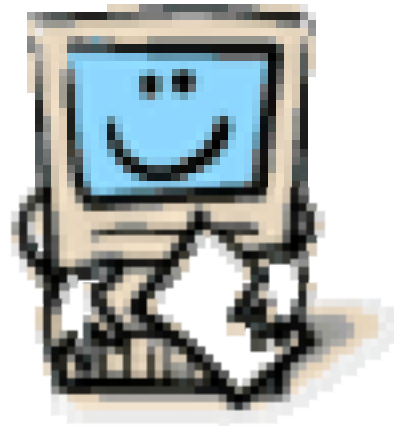
Faxes are sent through the enterprise WAN, utilizing the Least Cost Routing function – Provides significant savings in long distance faxing

# Basic FAXport features



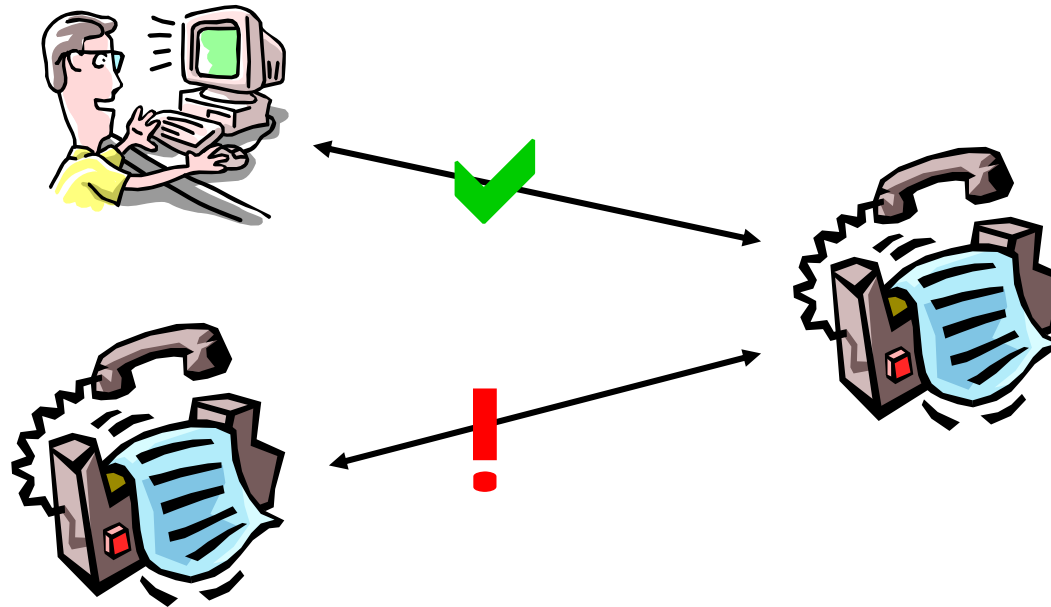
- ❖ Fax and e-mail from same message
- ❖ Full synchronization with Active Directory
- ❖ Attachment manager, use private and group attachments
- ❖ Fax database back-up
- ❖ Cover-page generator
- ❖ Real-time fax status
- ❖ Fax annotation
- ❖ Filter inbound faxes
- ❖ Auto Redialing
- ❖ Off-Peak dialing
- ❖ Dialing restrictions per user / group
- ❖ Remote management (SNMP)
- ❖ Global Address List access
- ❖ Support regular fax modems and intelligent fax boards
- ❖ And more.....

# API to External Applications



An extensive set of powerful APIs allow complete integration of fax functionality into almost any Windows or Web-based application.

# Fax Machine Vs Fax Server



faxing via Fax Server is significantly beneficial to the user and the organization, than faxing via Fax Machines !



# Savings With FAXport

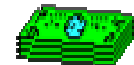


All Figures are in \$US	Fax Machine	FAXport
<b>Outbound Faxes</b>		
Labor cost to fax each document (calculated on 5 minutes per fax)	0.75	0
Consumables costs (calculated on 2.5 cents per B&W page)	0.05	0
Telecommunications costs (calculated on 5 cents per fax)	0.05	0.05
Total cost per document	0.85	0.05
Daily outbound Faxing cost (100 faxes)	<b>85.00</b>	<b>5.00</b>
<b>Inbound Faxes</b>		
Labor cost to deliver each fax document (calculated on 5 minutes per fax)	0.75	0
Consumables (calculated on 2.5 cents per B&W page)	0.05	0
Total cost per document	0.80	0
Daily inbound faxing cost (100 faxes)	<b>80.00</b>	<b>0</b>
Total Daily Cost	<b>165.00</b>	<b>5.00</b>
Total Monthly Cost	<b>3,795</b>	<b>115.00</b>
<b>Monthly Savings with FAXport</b>		<b>3,680</b>

Assumption: 100 Outbound faxes  
100 Inbound faxes Daily.



Dec 2007



# ROI with FAXport



Total Number of incoming and outgoing faxes per day	Annual savings (\$UD) with FAXport	The cost of FAXport server which supports the faxes volume	Return On Investment (in Months)
100	22,000	3,000	1.6
200	44,160	4,000	1.0
400	85,000	6,000	0.8



# FAXport & Enterprise IT



Enterprise IT Resource	FAXport's Contribution
<b>E-Mail</b>	Exchange & Lotus Notes Connector Fax to E-Mail E-Mail to Fax
<b>Internet</b>	Fax Over IP
<b>PSTN (Telephony)</b>	Fax Server standard features
<b>ERP / CRM</b>	Automatic delivery of business critical documents (SAP, Oracle, etc)
<b>BPA / BPM</b>	Inbound & Outbound fax platform
<b>Security</b>	Fax Server for highly secure networks
<b>Mobile User</b>	Remote printing
<b>Multifunction machines</b>	Send fax without the need for a telephone line (security feature)
<b>External Use</b>	Fax Broadcasting

FAXport integrated with the most common enterprise applications, and is part of everyday activities.