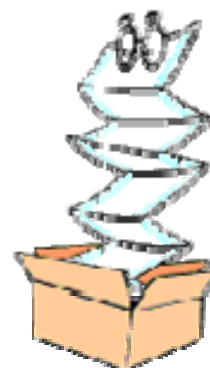




PrintController

Manage your Print Jobs Wisely



TYREXcell[™]

Dec 2007



PrintController

PrintController is a secure enterprise print management system, provides to the organization, print security, savings, and print management.

PrintController



Manage your print jobs wisely.....

PrintController is a print management system, for the Small, Medium & Enterprise business. It was designed for organizations that need to provide their users with optimal printing resources, while keeping complete control over printing related expenses, and printing confidentiality - including billing information. PrintController saves the organization significant amounts of printer-associated costs.

The problems

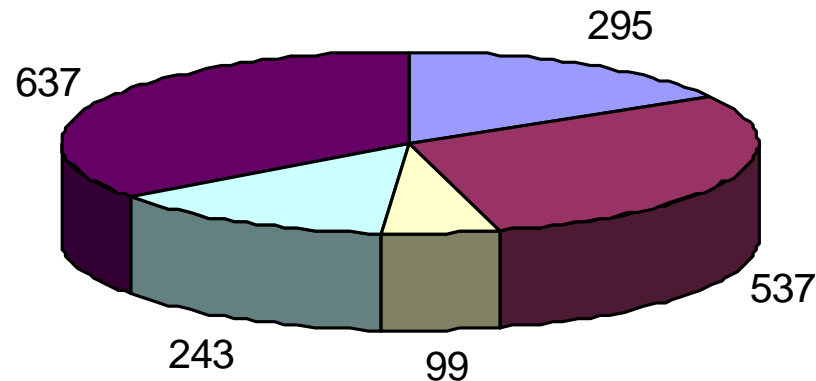
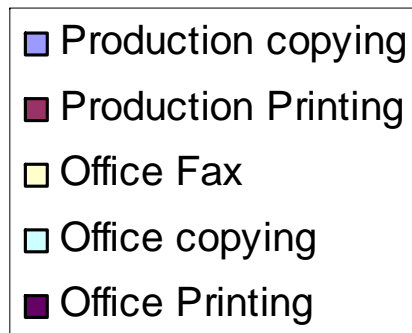


Manage your Print Jobs wisely.....

- ❖ Printer-associated costs are growing by 10% to 15% per year due to information proliferation and color printing.
- ❖ Organizations need to provide their users with optimal printing resources, while keeping complete control over printing expenses.
- ❖ Printing budgets often do not match actual printing expenses.
- ❖ Difficulties in accurately charging & billing print jobs done for customers, projects and other external entities.
- ❖ Confidentiality - Users disapprove of having their print jobs reviewed by others.
- ❖ Organizations tend to provide “Private” printers to privileged employees - which are hard to control and have high running costs.

Total Output Spending

Monthly Paper Output Per Employee



Estimates by Gartner Group put total output spending at between one and three percent of revenue. Printers, supplies and support are 10 to 20 percent of the typical IT budget. Budgets for printer-associated costs are growing by 10% to 15% per year.”

Printer-associated costs are growing rapidly

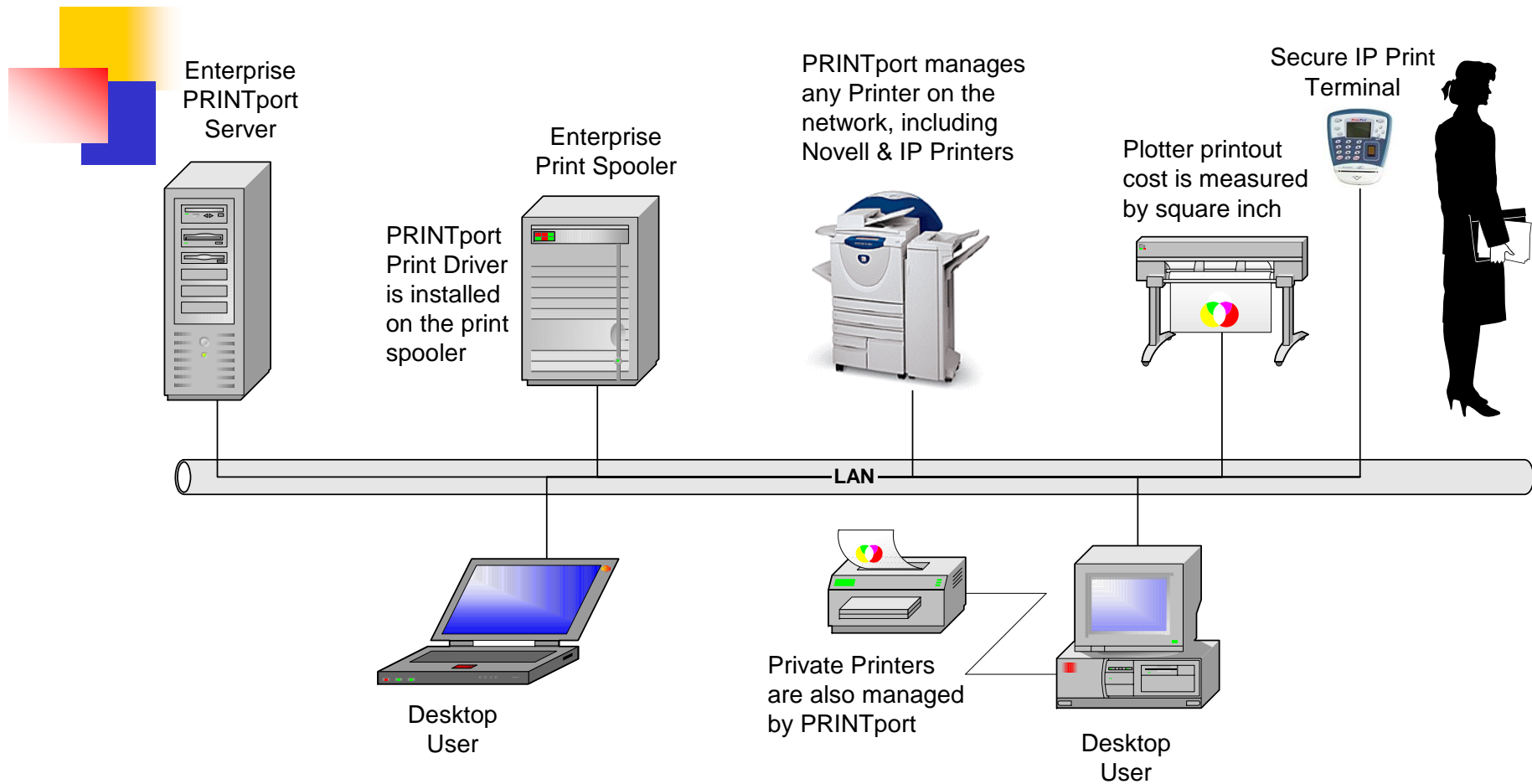
The Solution

Manage your print jobs wisely.....

PrintController provides solutions to those problems by allowing customers to deploy networked and private printers in the organization, with maximum control, while providing their users the optimal printing resources.



PrintController Network Architecture



PrintController manages network and private printers in the enterprise.

PrintController & Enterprise IT



Enterprise IT Resource	PrintController's Contribution
LAN Printers	Print Management
IP Printers	Print Management
Private Printers	Print Management
LAN / IP Printers	Secure printing (Via terminal or Cellular phone)
All Printers	Reporting and audit tracking

PrintController integrated with the all enterprise print resources, and is part of everyday activities.



PrintController



User Features

PrintController User

Manage your print jobs wisely.....



Edit User

General Info

User name: moshe

First name: Moshe

Last name: Brown

Email address: moshe@faxport.com

Department: Management

Restrictions

Allow color print

Get self confirmation for: 10 Pages and above.

Monthly quota: 200 Pages

Secure Release of Print jobs

Badge number:

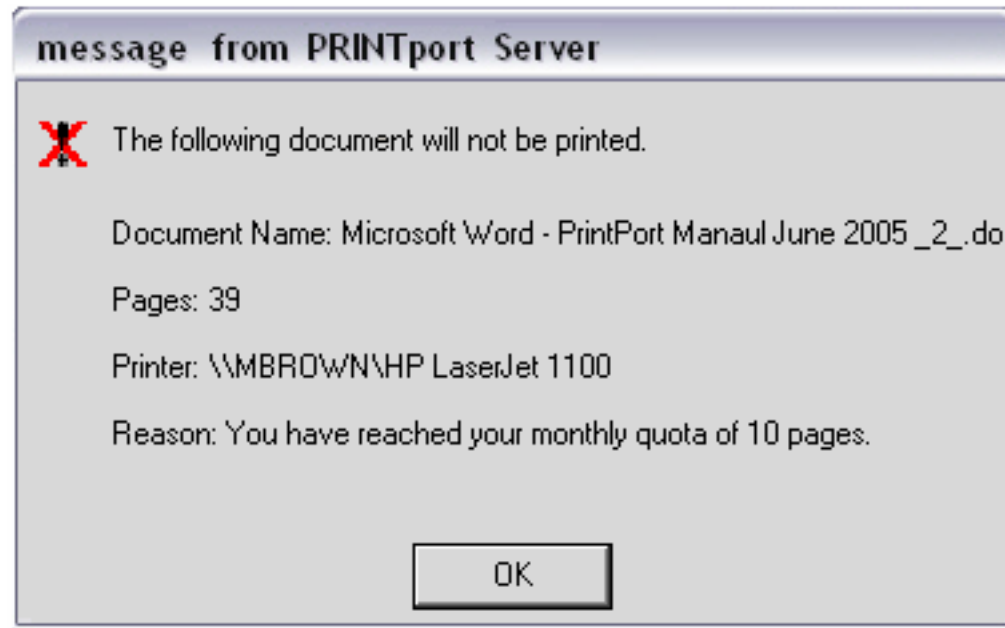
Password:

OK Cancel

- ❖ "Allow Color Print" per user.
- ❖ Set a monthly Quota per user
- ❖ Set large job confirmation per user.
- ❖ Set secure print per user

Quota Message

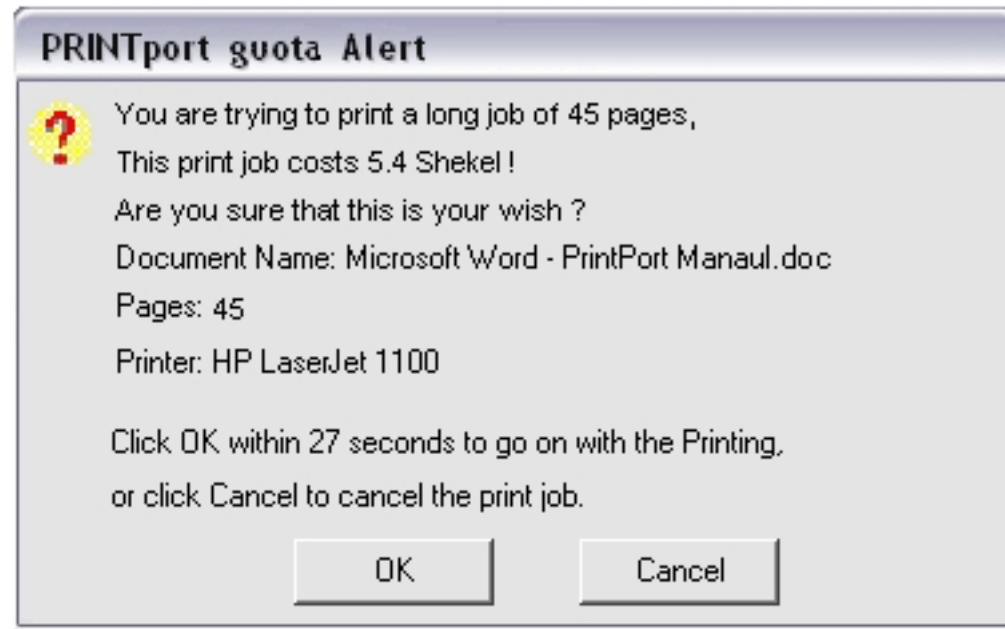
Manage your print jobs wisely.....



When a user runs out of quota, it is impossible to print jobs, unless the quota is increased.

Large Job Confirmation

Manage your print jobs wisely.....



The user will get this message when attempting to print large print jobs, this is used to prevent user mistakes, and needs a user confirmation to execute the print job.

Charge the print job

Manage your print jobs wisely.....



The screenshot shows a dialog box titled "PRINTport enter comments". It contains the following text and fields:

The document you have printed is now being handled by the printer,
Please enter a comment for the print job in the field below.

Document Name: Microsoft Word - PrintPort Manual June 2005_2_.do
Pages: 1
Printer: \\MBROWN\HP LaserJet 1100

Comment:

At the bottom of the dialog box are two buttons: "OK" and "Cancel".

An option that each print job will pop up the "Comments" dialog box - by entering the specific billing name/number of the print job, a billing record is generated.

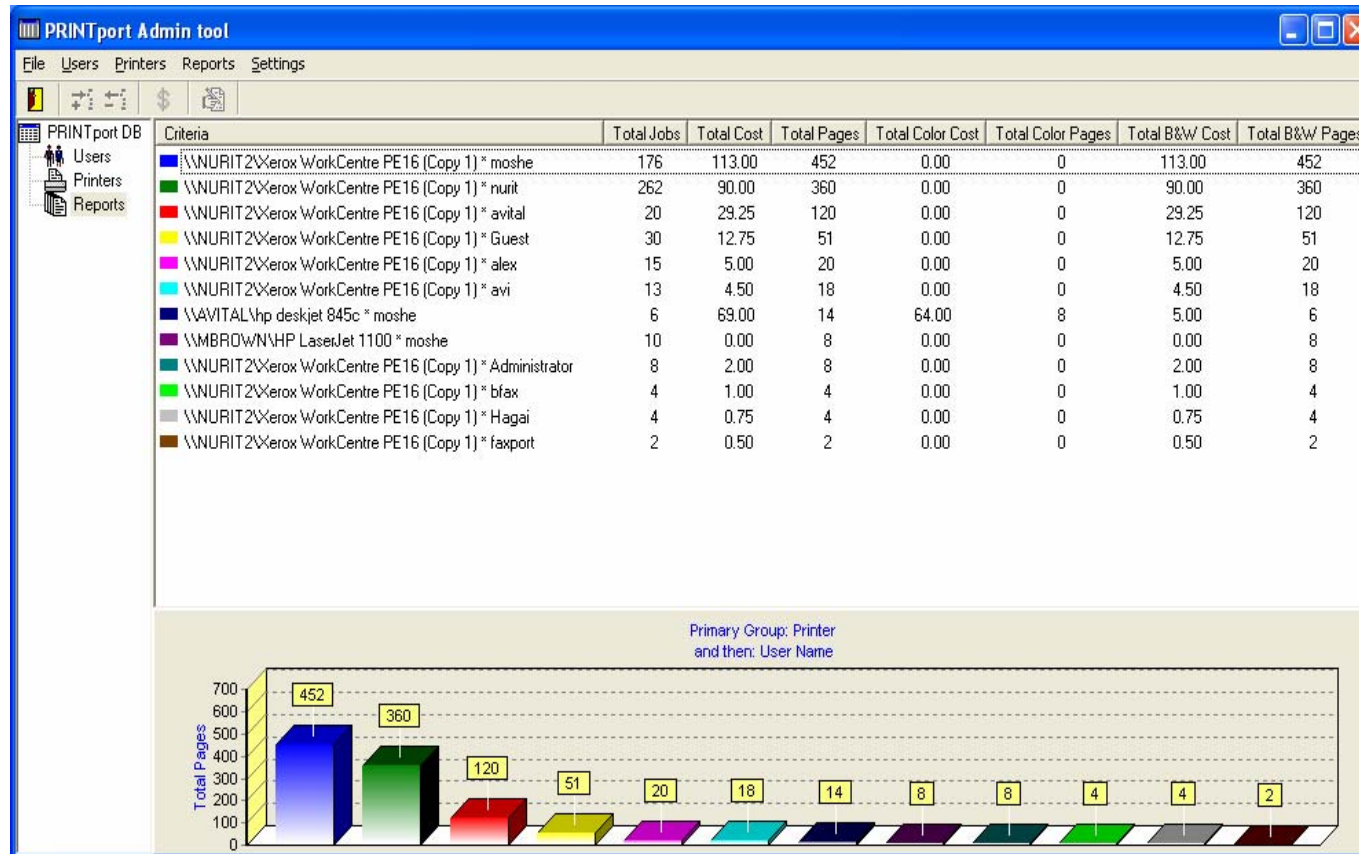


PrintController



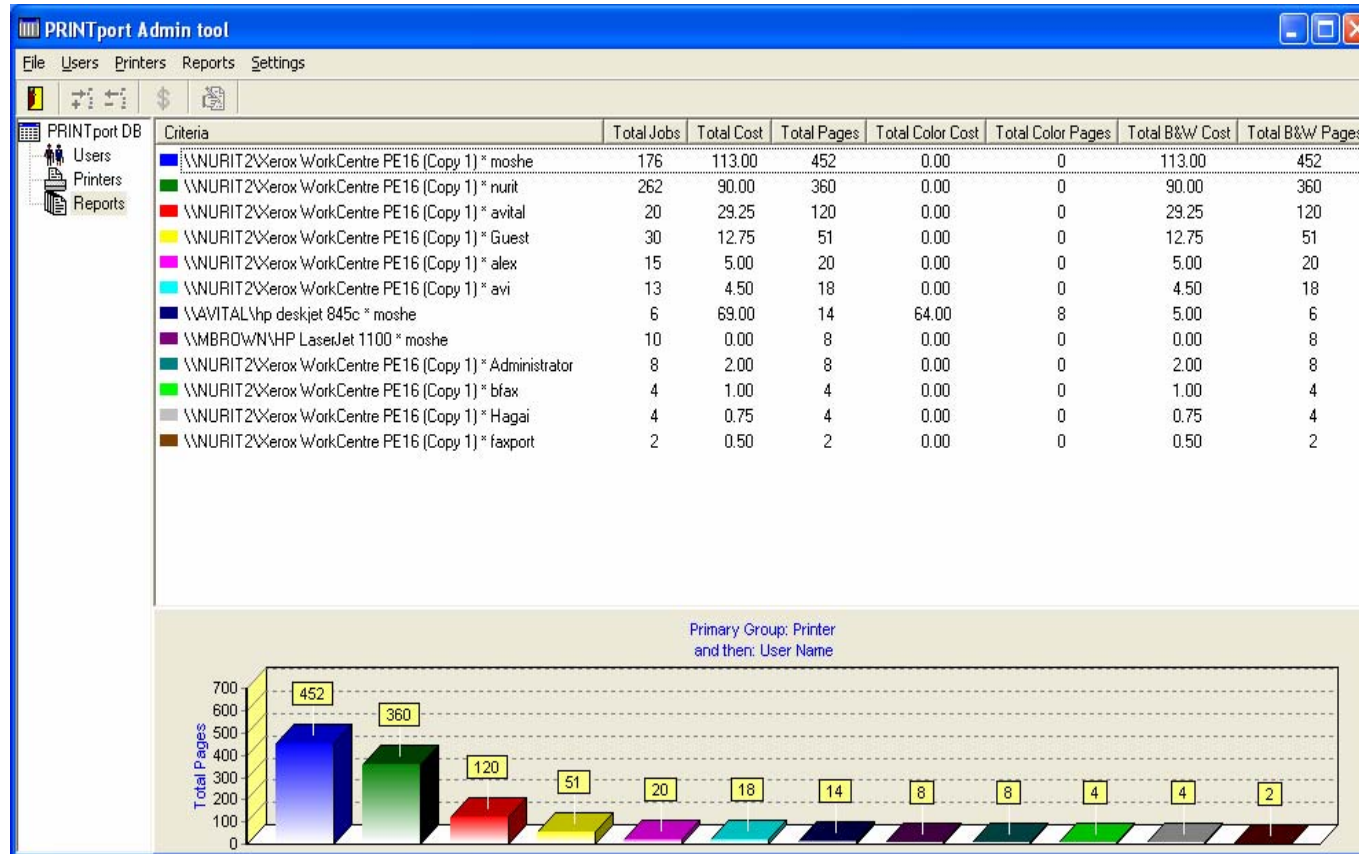
Reports

Billing Report



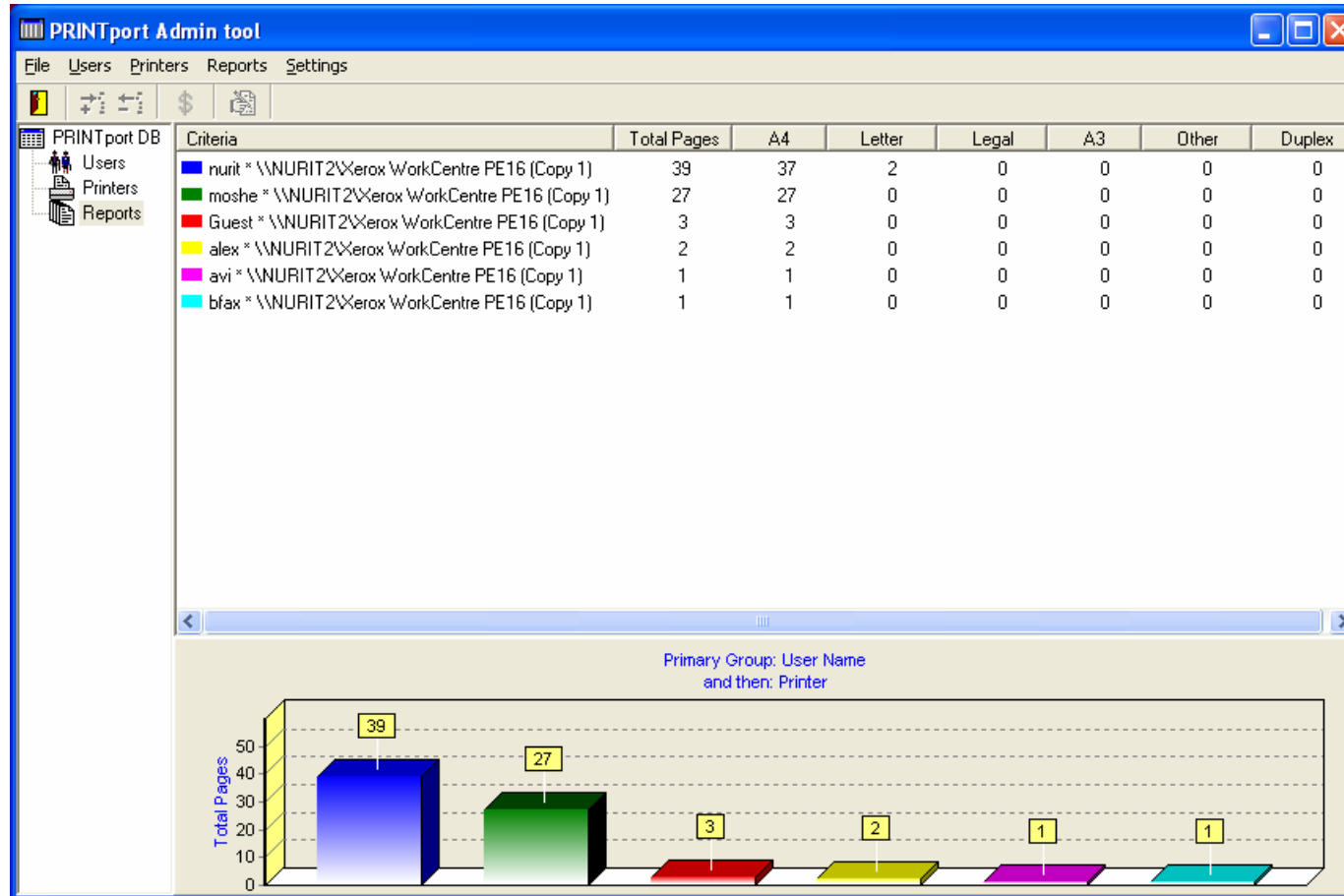
It is possible to prepare billing reports for a given time window, sorted by: User, Department, Printer, Print Job, Project, Customer, Color Printout, Paper size, B&W printout.

Ranking Reports



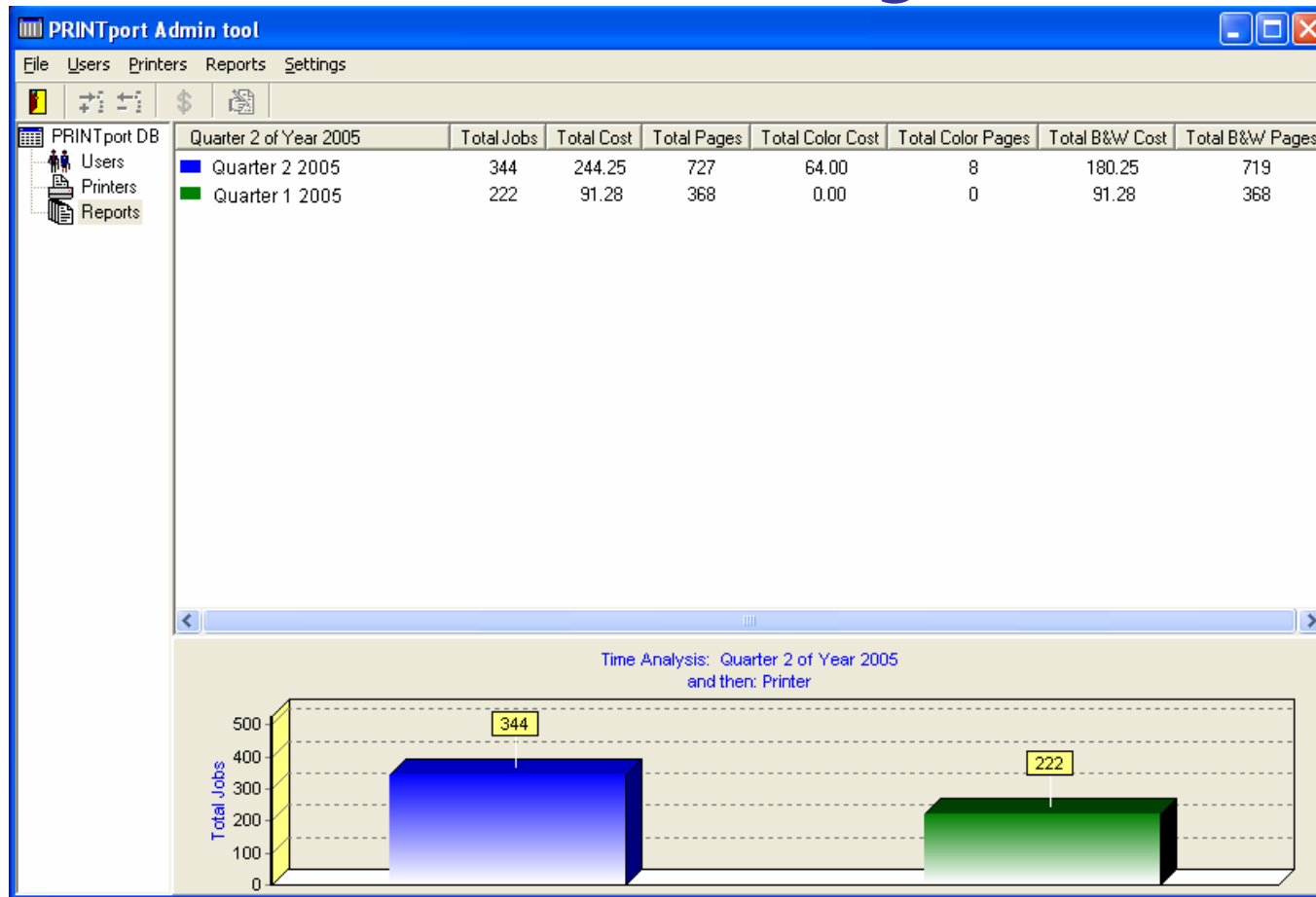
By: User, Printer, Cost, Pages, Color, B&W

Page Analysis



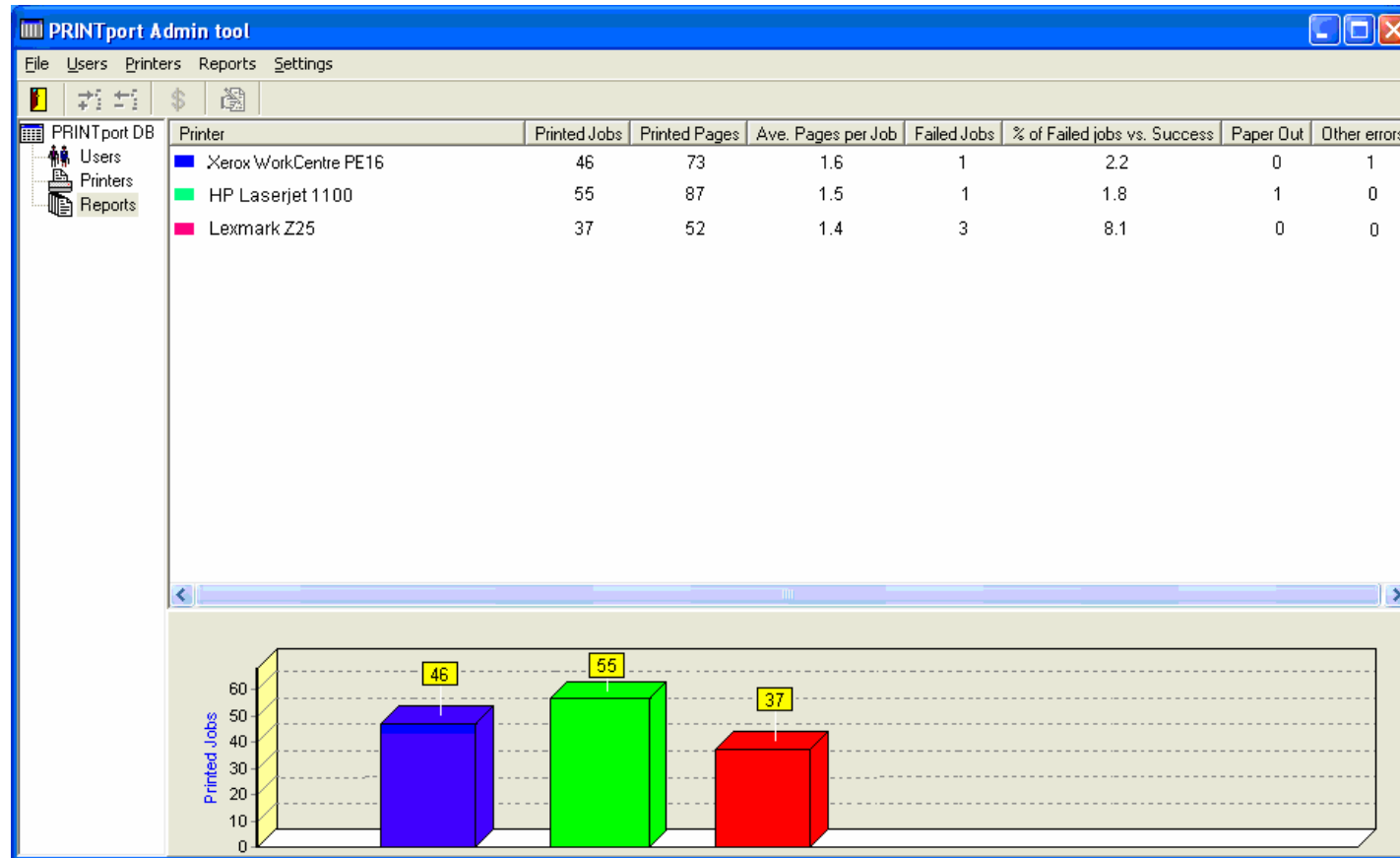
Page Analysis by page types in a given period

Time Analysis



Compare print activity by: Jobs, Cost, Pages, Color, B&W. The system allows performance comparison between time periods, in: days, weeks, months, quarters and years.

Failure Analysis



Failure analysis by Printer in a given period



PrintController



System Management

Server Settings



- ❖ Server setup
- ❖ User Notifications
- ❖ IP Printers handling
- ❖ Billing Notifications
- ❖ Alerts to system manager
- ❖ User alerts
- ❖ SMTP Setup

PRINTport Server Settings

PRINTport Service
Status: Not running [Start]
Startup type: Manual
Log On account: LocalSystem
Password: []

Client UI
 Display Comment edit box

Network Printers
 Create virtual printers

Debug logs
 Generate debug logs Save logs for 7 days
[View Server log] [View Admin log]

Billing notification
 Send billing notification for each print job

Alerts
 Send Alerts to administrator
Administrator email: []
 Send Alerts to the originator user

SMTP
SMTP server: []
Reply to: hagai@vered.com
User name: []
Password: []

[OK] [Cancel]

Users Management



- ❖ Add Users
- ❖ Edit Users
- ❖ Delete Users
- ❖ Import Users

Import from Active Directory

Server:

User Name:

Password:

Mapping

User Name:

First Name:

Last Name:

Password:

Badge No:

Email address:

Department:

Status:

PRINTport Admin tool

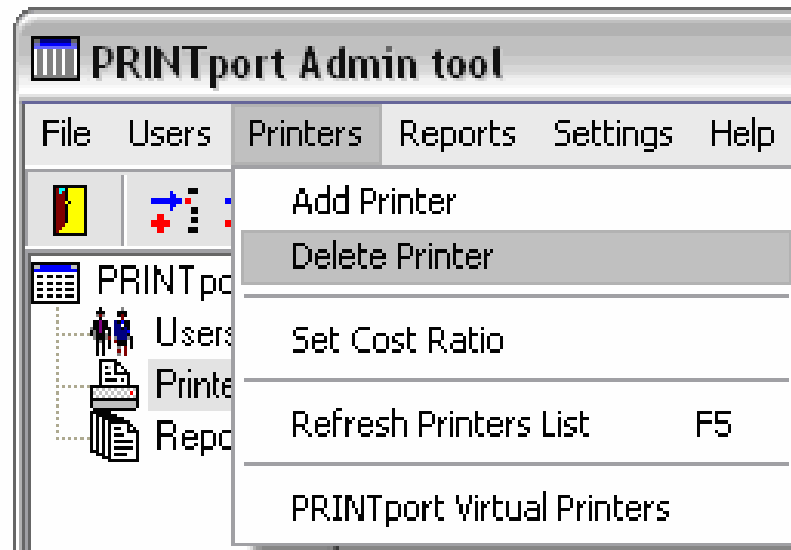
File Users Printers Reports Settings Help

PRINTport DB	User Name	First Name	Last Name	B.	Email Address	Department	Self Confirmation	Monthly Quota
Users	avi	Avi	Haybi		avi@faxport.com	IT&Support	2	50
Printers	sara	Sara	Yedlin		sara@faxport.com	Bookkeeping	5	150
Reports	alex	Alex	Firumians		alex@faxport.com	Develop	5	50
	moshe	Moshe	Brown		moshe@faxport.com	Management	10	200
	marian	Marian	Markov		marian@faxport.com	Develop	5	50

Printers Management



- ❖ Add & Delete printers.
- ❖ Adding a new printer can be done just by sending a print job to the new printer.
- ❖ Cost per page can be assigned for each printer specifically.



Printer Management



The system manages IP and Novel printers

The screenshot displays the PRINTport Admin tool interface. The main window shows a menu with options: Add Printer, Delete Printer, Set Cost Ratio, Refresh Printers List (F5), and PRINTport Virtual Printers. A table lists printer details:

	Cost Ratio (%)	Printer Port
	100	USB002
	100	LPT1:
	100	IP_192.168.10.21
	100	IP_192.168.10.8
	100	LPT2:
	100	IP_192.168.10.21
	100	IP_192.168.10.21

The 'PRINTport Virtual Printers' dialog box is open, showing a table with the following data:

Printer Name	Printer Port
\\User_2\IP_Printer	IP_192.168.10.8

Below the table, instructions state: "Choose printer(s) from the above list, then choose a Virtual Printer and click the Merge button to merge the selected printer(s) into the selected Virtual Printer. All the print jobs of the selected printer(s) will be assigned to the selected Virtual Printer." A 'Merge' button is present.

The 'PRINTport Virtual Printers' section lists:

Virtual Printer Name	Associated Printers
IP Printer first floor	\\User_1\IP_Printer \\User_3\IP_Printer \\User_4\IP_Printer

Buttons for 'New', 'Delete', 'Remove', and 'Close' are located at the bottom of the dialog.

Page Set-up



The system arrives with 100 different page forms sizes, and knows the relations between them.

By selecting a cost for a standard page, all other page sizes costs are setup automatically.

It is also possible to set print cost per square inch; this feature is targeted to plotters.

Cost per Page

Basic cost per page _____

B&W cost: Color cost:

Costs according paper size

Description	ID	Ratio (%)	B&W cost	Color cost	
Letter 8 1/2 x 11 inch	1	100	1.00	3.00	
Letter 8 1/2 x 11 inch	2	100	1.00	3.00	
Tabloid 17 x 11 inch	3	200	2.00	6.00	
Ledger 11 x 17 inch	4	200	2.00	6.00	
Legal 8 1/2 x 14 inch	5	100	1.00	3.00	
Statement 5 1/2 x 8 1/2 inch	6	50	0.50	1.50	
Executive 7 1/4 x 10 1/2 inch	7	80	0.80	2.40	
A3 297 x 420 mm	8	200	2.00	6.00	
A4 210 x 297 mm	9	100	1.00	3.00	

Custom paper size _____

The cost of Custom sizes which are not listed on the above list will be calculated automatically according the printed area and the cost per square unit, the system will use the cost of A4 (210 x 297 mm) as a reference for calculating the cost per square unit.

Units _____ Cost _____

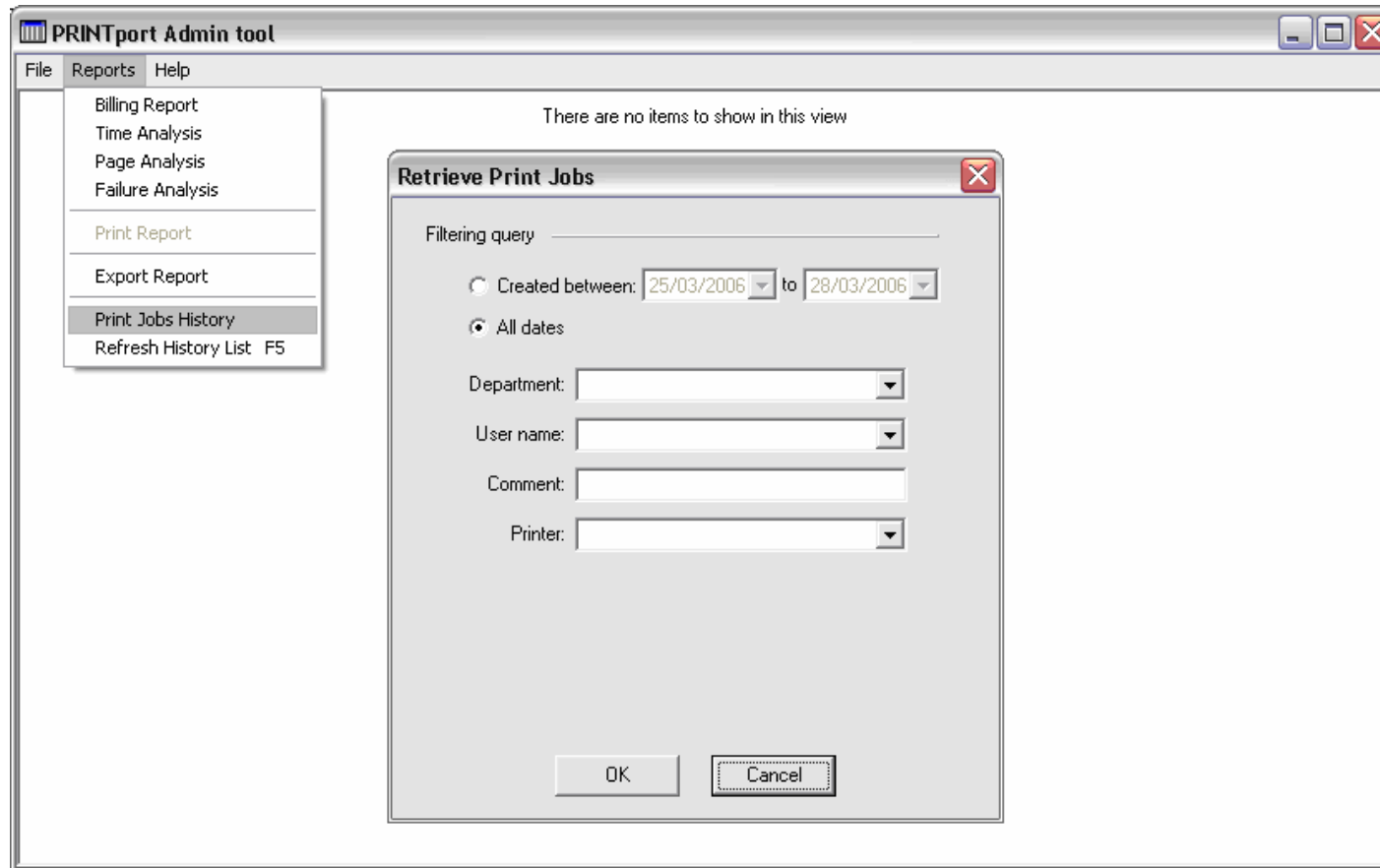
Inches Cost per B&W square Inch: 0.0103438

Centimeters Cost per color square Inch: 0.0310314

Millimeters

OK Cancel Apply

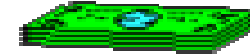
Remote Management



It is possible to generate from every desktop on the network, any type of report, with the Remote management tool.

The Saving

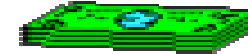
Manage your print jobs wisely.....



1. Color printing permission / approval per user
2. Color tracking per print job (Combined B & W and Color)
3. Page quota per user
4. Large print job confirmation by user
5. Assign each print job to project, customer, budget
6. Reduction of private printers due to secure print
7. Reports generator – easy tracking
8. User awareness of print jobs costs

ROI

Manage your print jobs wisely.....



Number of Printers in the Organization	Monthly cost of print related consumables	Annual cost of print related consumables	30% annual savings with PrintController	PrintController purchase cost	ROI in Months
10	1,100	13,200	3,960	1,600	4.84
50	5,000	60,000	18,000	4,400	2.93
100	9,300	111,600	33,480	7,800	2.79
250	21,100	253,200	75,960	10,000	1.58

Figures are in \$US