



SMSport



TYREXcell

Dec 2007



SMSport

SMSport - Sends and receives SMS messages “to” and “from” mobile phones (e-mail, notifications, etc.).

SMSport

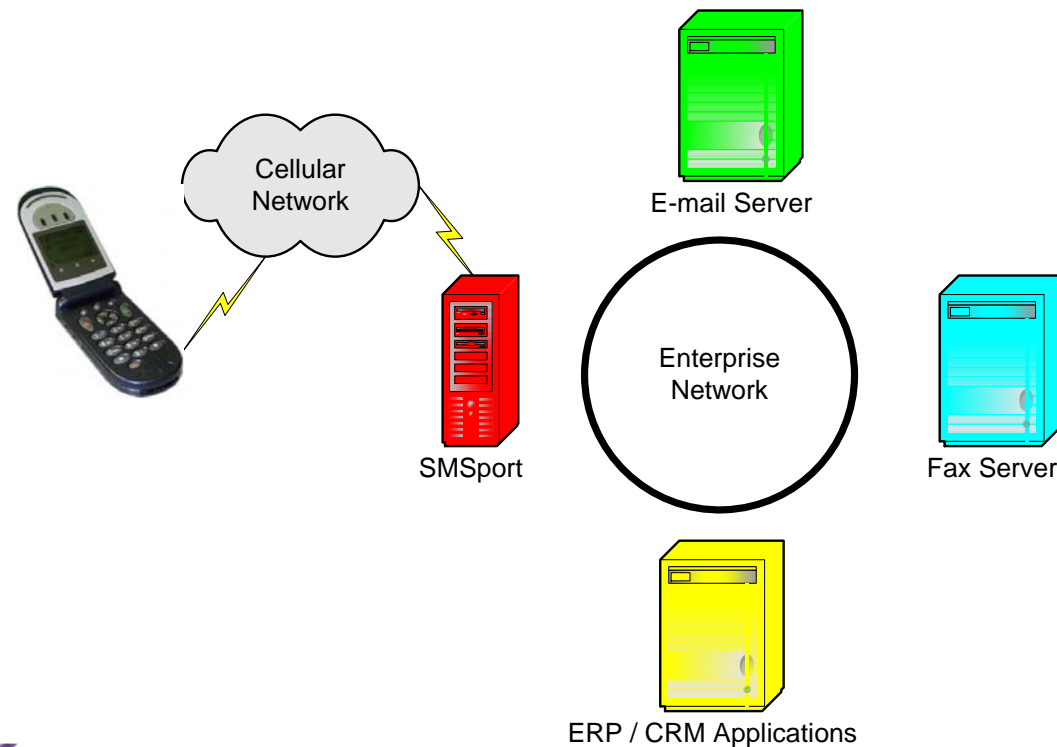


SMSport extends the mobile Short Message Service (SMS) into a robust business solution. SMSport allows desktop and back-office applications to send and receive SMS messages to and from mobile phones conveniently.





By providing prompt access to the corporate intranet; E-mail Server, Fax Server, and enterprise database, SMSport becomes a powerful communication tool that improves services, working methods and business efficiency, between the organization and its employees, customers, suppliers, and other affiliates.





SMSport provides the infrastructure, the applications and the interfaces required to offer a device independent system that works with most business applications such as e-mail, calendar, contacts and the corporate database.





Businesses have now recognized the potential of this innovative medium to deliver new services and extend relations with business partners:

- ❖ Account balance
- ❖ Promotions of new products
- ❖ Itinerary changes
- ❖ Appointment reminders
- ❖ Overdraft alerts
- ❖ Stock Market monitoring
- ❖ Policy renewal notification/confirmation
- ❖ Service locator
- ❖ And many more services.....



No need to buy special cellular units, no need to pay a monthly service charge, no need to program cellular units, no need to train the employees.

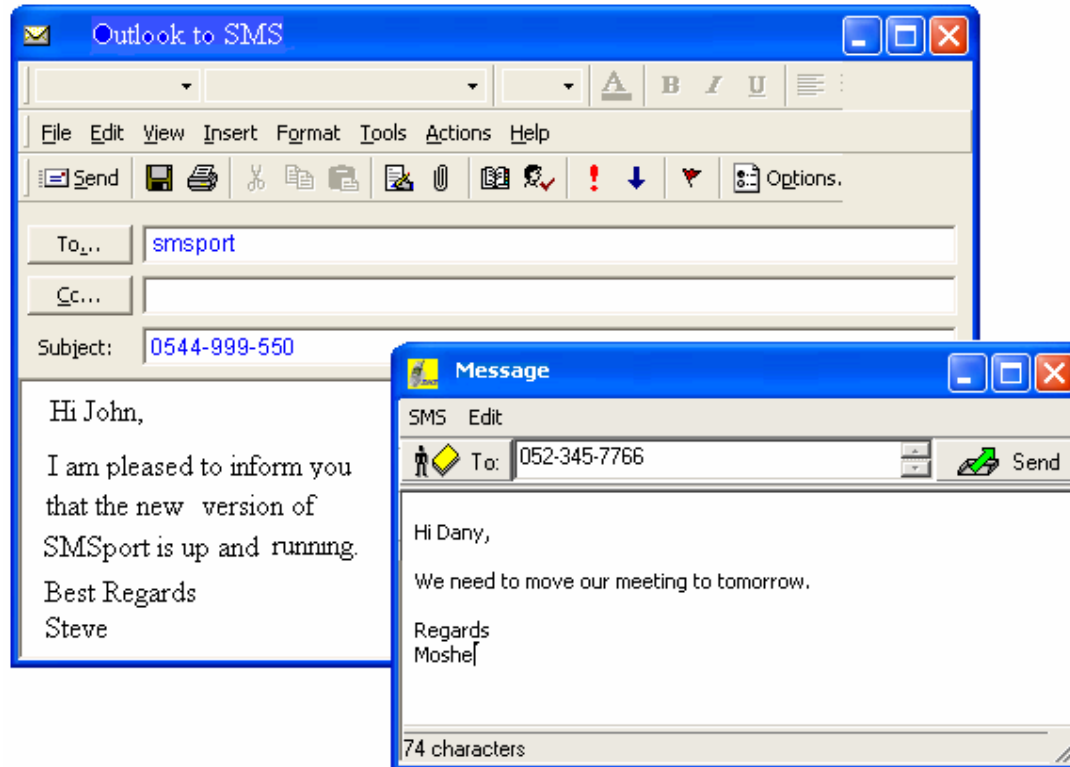


SMSport Server includes software and a cellular modem (at least one modem – it is possible to install many modems, as needed). The server can be installed on any PC on the network, and the cellular modem should be connected to that PC, there is no need for a special server.





Outlook to SMS Application to SMS



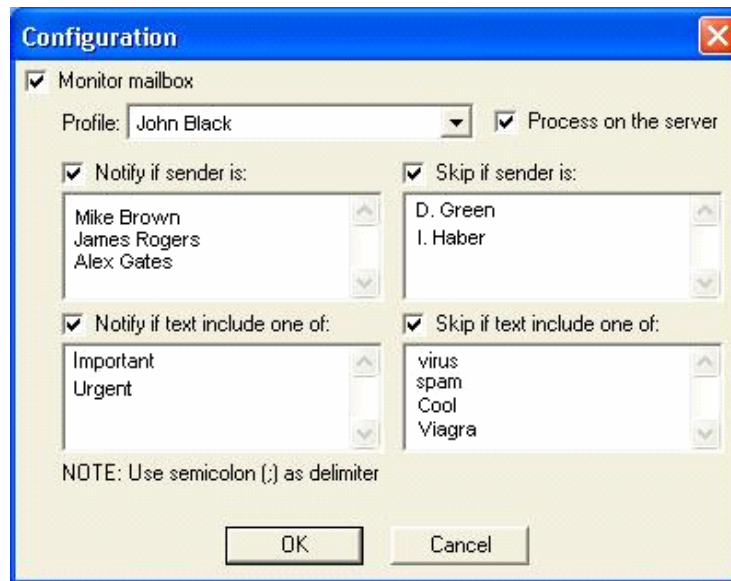
SMS messages can be sent from Outlook or from SMSport's Client, as an e-mail. The SMS recipients can be entered casually, or taken from the corporate GAL directory, or taken from any address book.



Receive E-mail Anywhere



Intuitive E-mail Filtering



Complete access to office e-mail whilst on the move, including e-mail alerts throughout the day. The user defines which e-mail will generate an SMS alert; sorted by: Key words, Sender, Subject, and CSID number (in case it is a fax).



SMS to E-mail



The SMSport cellular user can send e-mails to any e-mail address from the cellular device. It is possible to reply to e-mails, to Forward e-mails, and to generate new e-mails.



Read E-mails while on the road



Powered by FAXport fax server, SMSport allows the mobile user whilst on the move, to print his e-mails on any fax machine (e-mail & attachment, inbound fax).



Contact Information Retrieval



SMSport allows access to corporate directories, or personal address book, from the cellular device.



Access to back-office data



SMSport provides access to back office SQL database for retrieval of needed information in real time (customer details, pricing, etc.).



Scheduling on-the-fly



SMSport will provide daily schedule and notifications of any changes directly to the cellular device.



SMS Broadcasting



SMS broadcasting is easy to use, fast, and efficient. The SMSport server can accommodate multiple modems allowing reduction in broadcasting cycle.



Emergency Alerts



Any defined Task / Application / Service that runs on the network can be configured to generate an SMS alert, in case they fail.

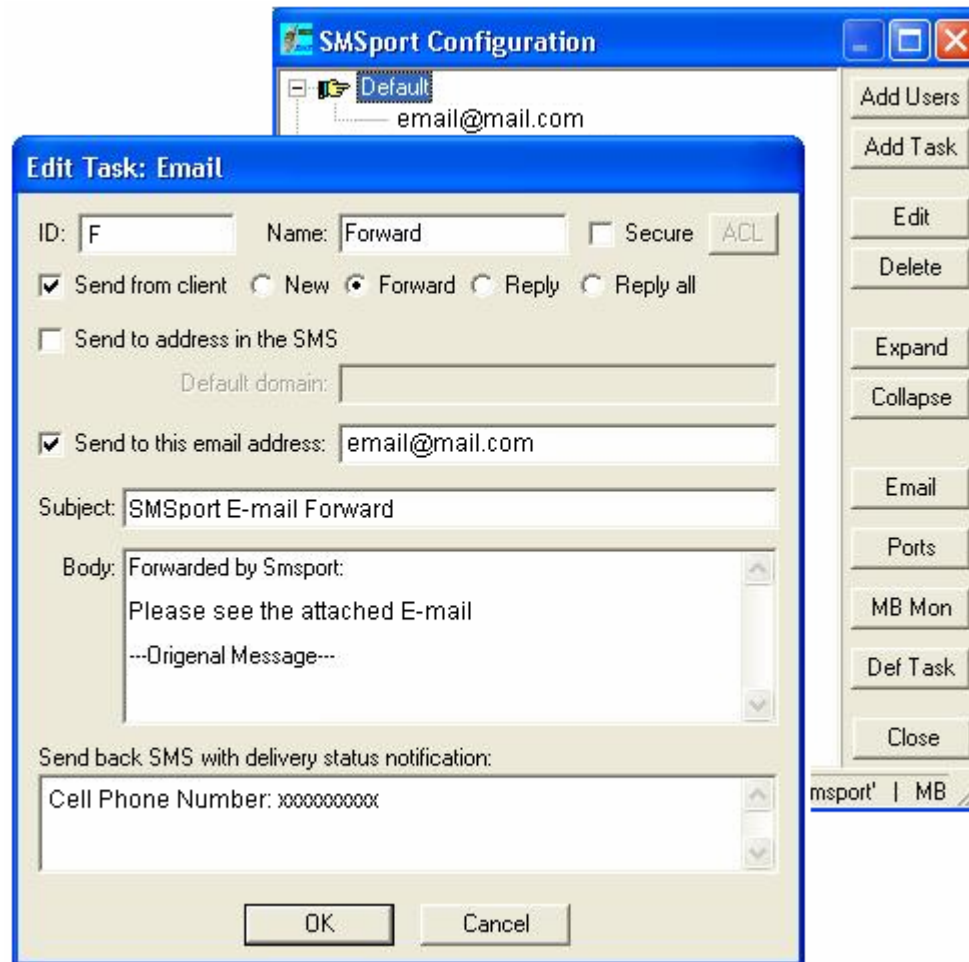


Generic Remote Control



By integration SMSport with various enterprise application the mobile unit can substitute data-entry devices, and can function as a generic remote control unit, as a door opener for example.

SMSport allows to generate an unlimited number of tasks.



The screenshot displays the 'SMSport Configuration' application window. In the foreground, the 'Edit Task: Email' dialog box is open, showing the following fields and options:

- ID: F
- Name: Forward
- Secure: (with an ACL button)
- Send from client: (Other options: New, Forward, Reply, Reply all)
- Send to address in the SMS:
- Default domain: [Empty text box]
- Send to this email address: email@mail.com
- Subject: SMSport E-mail Forward
- Body: Forwarded by Smsport:
Please see the attached E-mail
---Original Message---
- Send back SMS with delivery status notification:
- Cell Phone Number: xxxxxxxxxx

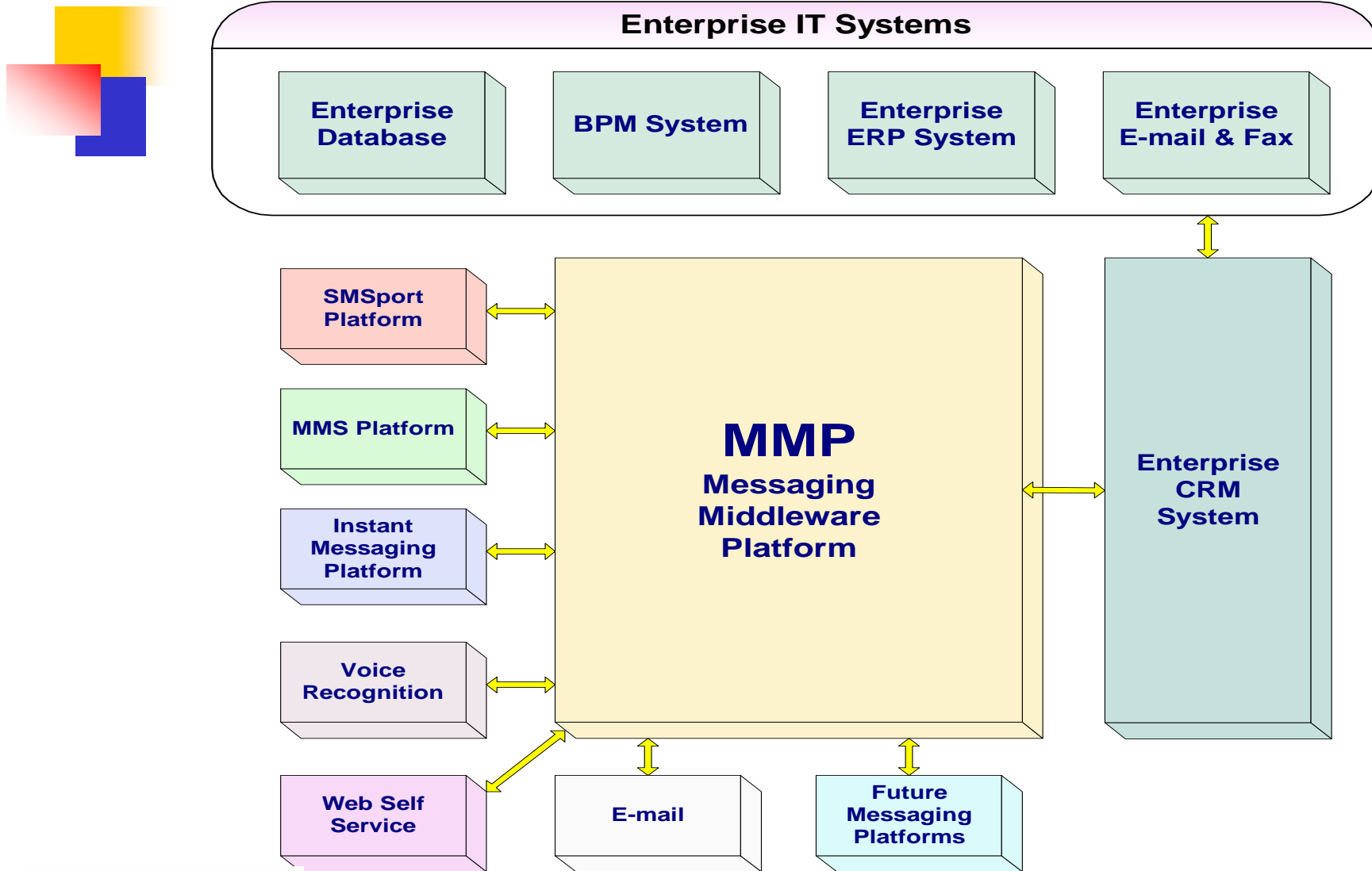
Buttons at the bottom of the dialog: OK, Cancel.

Buttons on the right side of the configuration window: Add Users, Add Task, Edit, Delete, Expand, Collapse, Email, Ports, MB Mon, Def Task, Close.



SMSport combined with Natural Language Processing (NLP) Technology

MMP System Architecture



SMSport & Enterprise IT



Enterprise IT Resource	SMSport's Contribution
E-Mail	E-Mail to SMS SMS to E-Mail Remote printing of E-mail Synchronization with Exchange (GAL, Calendar)
ERP / CRM	Automatic delivery of critical messages
Corporate Database	Secure synchronization with enterprise database
Network Management	Alarms platform
Security	Alarms platform from physical & data security systems
BPM	Short message platform
Help Desk	User problem logging, and fix confirmation
Printers	Secure print release by SMS
External Use	SMS broadcasting

SMSport integrated with the most common enterprise applications, and is part of everyday activities.